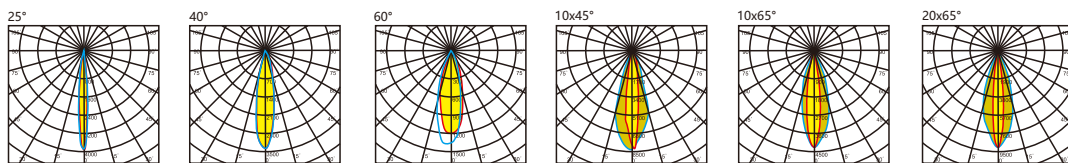
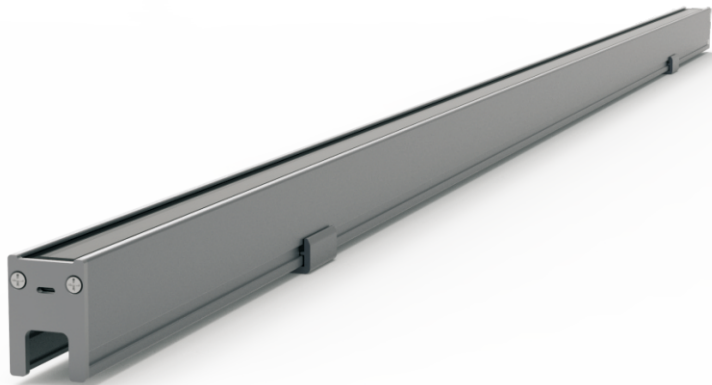




Model : i-LL-111



Specication

material color  

Power (Luminaire)	12W / 15W
LED Type	Power LED (48/60Pcs/M)
CRI	>90
Size	W16*L1000*H30mm
Lumen (Luminaire)	67lm/W
Input Volt	DC 24V
Color Temperature	1800K-6500K
Beam Angle	15° ,25° ,40° ,60° ,10x45° ,10x65° ,20x65° ,120°
Driver	Nondim
LED Life	50000h
IP Rating	IP 66
LEN	Clear / Frosted / Milky
Enclosure Material	Aluminum Anodized
Accessories	End cap and Clips

