



# i-PL-520



Aluminum profile installation



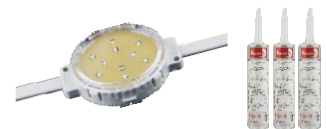
Screw installation



Buckle installation



Glue installation



## Specication

Power (Luminaire)	2.5W
LED Type	SMD 3535 (10Pcs)
CRI	>90
Size	Dia60*H15mm
LED Brightness	Red: 600-800mcd, Green: 2500-3000mcd,Blue: 800-1000mcd
Input Volt	DC 24V
Color Temperature	RGB,RGBW,Red,Green,Blue,White(1800-6500K)
Working temperature	-30—45 °C
Beam Angle	15°
Driver	Serial SPI / DMX512
LED Life	50000h
IP Rating	IP 68
Cover	PC
Enclosure Material	ABS
Cable	5 wire(DMX 512), 4 wire( SPI)

