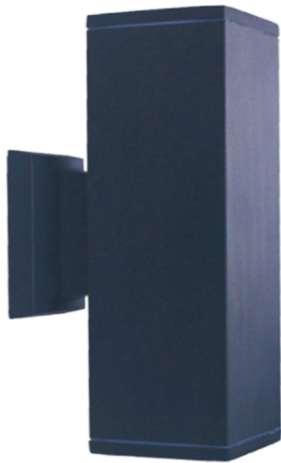




i-SM-C645



Specication



Rated Power	5W/10W/15W/20W/30W
LED Type	COB
CRI	>90
Size	D65*L160/D90*L260/D108*L300/D145*L300/D160*L300 , H50mm
Luminaire luminous efficacy	600lm./1200lm./1800lm./2400lm./3600lm.
Input Volt	AC 220V
Color	2700K/3000K/4000K/5000K/6000K/R/G/B
Beam Angle	24°, 36°, 60° reflector cup
Driver	Nondim
LED Life	50000h
IP Rating	IP 65
Glass	Tempered glass, Clear / Frosted treatment
Enclosure Material	Die-cast Aluminum
Surface Color	Dark Brown

