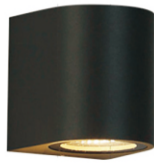




## i-SM-C655



## Specication

|                             |   |
|-----------------------------|---|
| Rated Power                 | 2x5W/5W                                   |
| LED Type                    | COB                                       |
| CRI                         | >90                                       |
| Size                        | L150*W65*H90mm / L80*W65*H90mm            |
| Luminaire luminous efficacy | 600lm./1200lm./1800lm./2400lm./3600lm.    |
| Input Volt                  | AC 220V                                   |
| Color                       | 2700K/3000K/4000K/5000K/6000K/R/G/B       |
| Beam Angle                  | 24°, 42°, 60° reflector cup               |
| Driver                      | Nondim                                    |
| LED Life                    | 50000h                                    |
| IP Rating                   | IP 65                                     |
| Glass                       | Tempered glass. Clear / Frosted treatment |
| Enclosure Material          | Die-cast Aluminum                         |
| Surface Color               | Dark Brown                                |

